

alliston
AT HOME

QUICK POSSESSION



Artist's rendering. The elevation and colours of the final home may differ from those shown.

LAUREL

3 Bed | 2.5 Bath | 1,775 sq. ft.

466 South Shore Drive
Chestermere, Alberta
Block 8 | Lot 20

403-235-0012
southshore@allistongroup.ca
allistongroup.ca

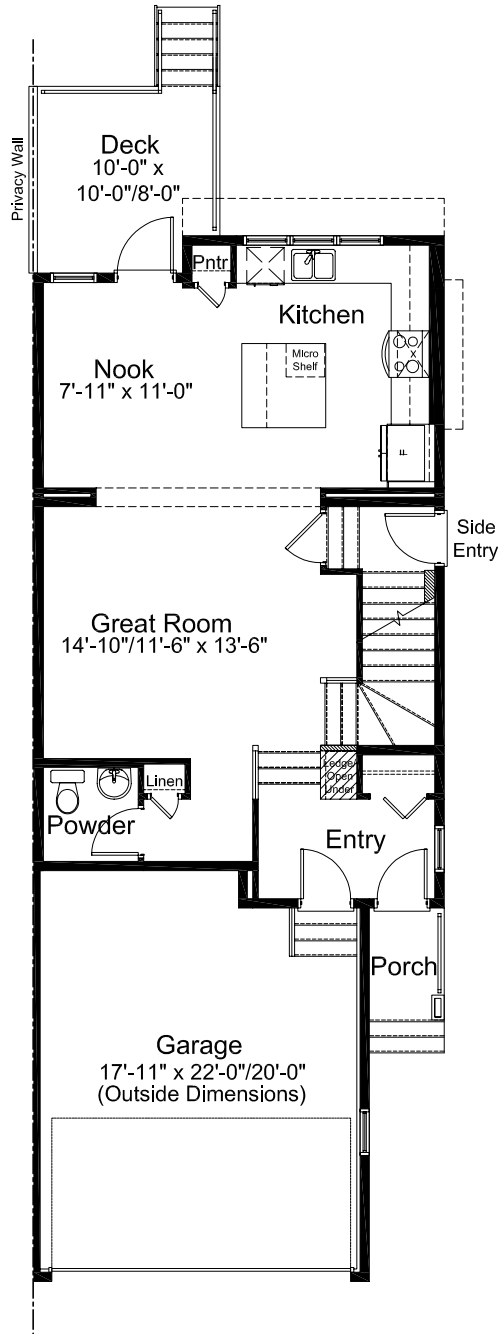


- Open Concept Living Area
- Luxury Vinyl Plank Flooring
- Luxury Vinyl Tile
- Stainless Steel Appliance Package
- Whirlpool Washer & Dryer Set
- Rear Kitchen Layout
- Quartz Countertops Throughout
- 3-piece Ensuite & W.I.C.
- Woodruff Railing Design
- Upper Floor Laundry
- Upper Floor Loft
- Rear Deck
- Side Entry
- Attached Double Car Garage
- Triple Pane Windows
- Corner Lot w/ Extra Windows

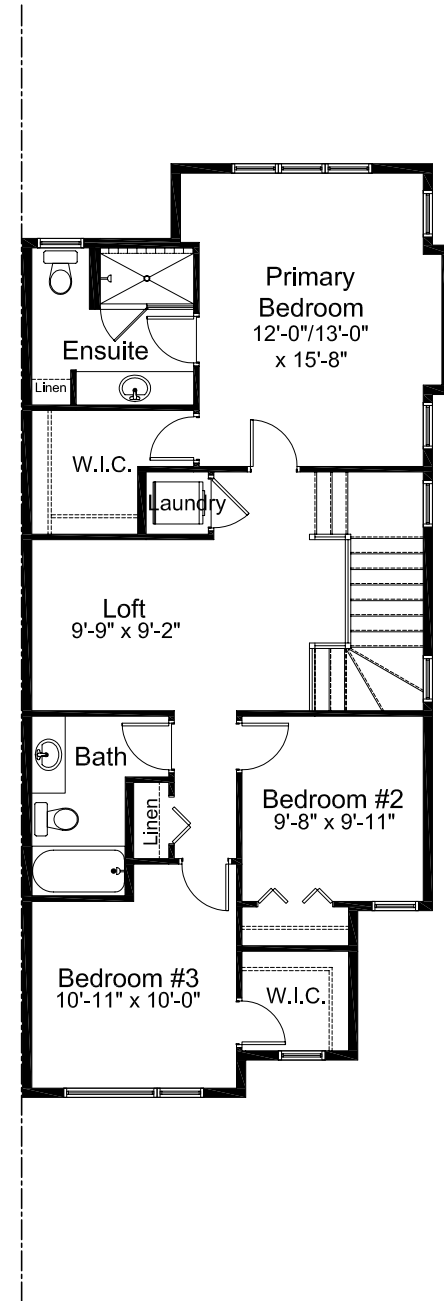
Edited: October 11, 2025
 The builder reserves the right to modify or change plans, specifications, features and prices without notice. Materials may be substituted with equivalent or better at the builder's sole discretion. All dimensions and sizes are approximate and are based on architectural measurements. As reverse, mirrored and/or flipped plans occur throughout the building, please see architectural plans if material to your decision to purchase. Renderings, furnishings and equipment shown are an artist's conception and are intended as a general reference only. Please see disclosure statement for specific offering details. E. & O.E.



ELEVATION



MAIN FLOOR 753 sq. ft.



UPPER FLOOR 1,022 sq. ft.