

alliston

AT HOME

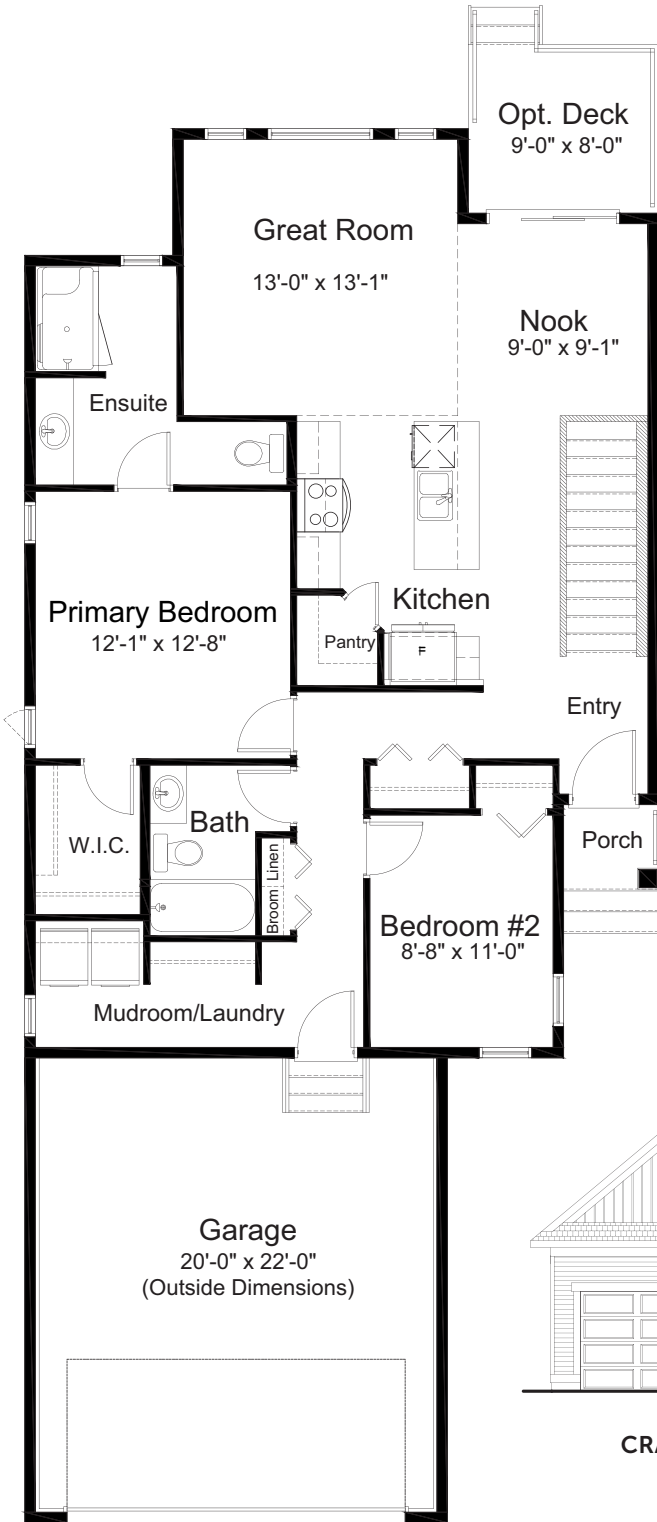


OLIVE II bungalow

1,188 sq. ft.

2 Bed

2 Bath



MAIN FLOOR 1,188 sq. ft.



CRAFTSMAN ELEVATION

features

- Open Concept Living
- Spacious Kitchen Layout
- Walk-in Kitchen Pantry
- Stainless Steel Appliance Package
- Quartz Countertops Throughout
- Spacious Ensuite & W.I.C.
- Mudroom/Laundry
- Flex Room/Den
- Attached Double Car Garage
- Triple Pane Windows

587-893-3870

ironlanding@allistongroup.ca

Iron Landing
CROSSFIELD, AB.

Edited: April 22, 2026

The builder reserves the right to modify or change plans, specifications, features and prices without notice. Materials may be substituted with equivalent or better at the builder's sole discretion. All dimensions and sizes are approximate and are based on architectural measurements. As reverse, mirrored and/or flipped plans occur throughout the building, please see architectural plans if material to your decision to purchase. Renderings, furnishings and equipment shown are an artist's conception and are intended as a general reference only. Please see disclosure statement for specific offering details. E. & O.E.